

Charges

LIVERNORTH has undertaken to pay the annual rent of approximately £5000.00. to the Newcastle upon Tyne Hospitals Trust. To help with this cost we ask for a small cover charge:

£5.00 per person per night for 1st night

£3.00 per person per night thereafter.

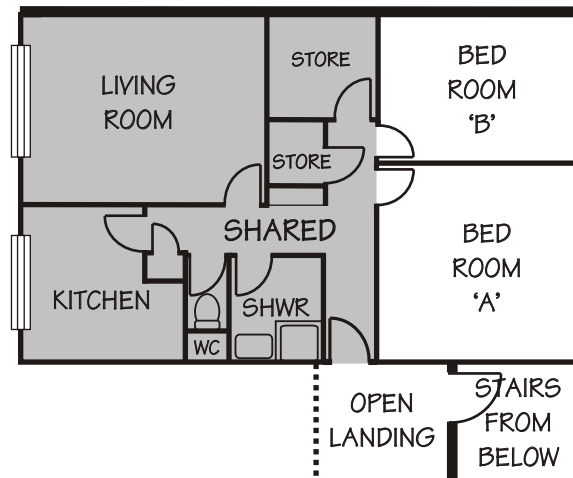
A bill will be sent to you at your home address.

Suggestions

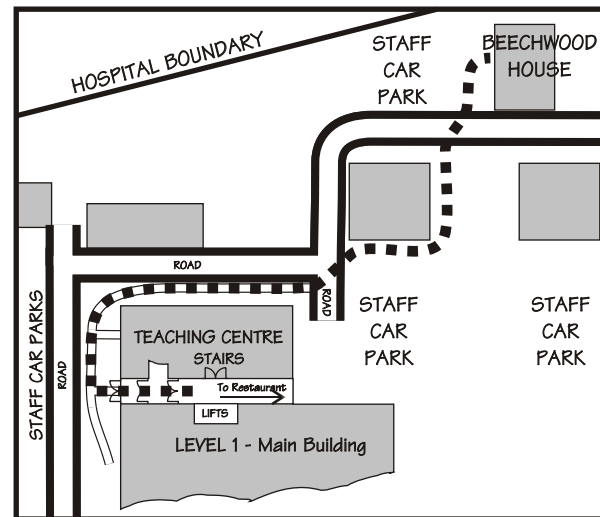
LIVERNORTH hopes that your stay in our accommodation is comfortable and fulfills your requirements. If you have any comments or suggestions concerning the flat please let us know by contacting:

LIVERNORTH
Freepost NEA2762
Stanley
Co. Durham
DH9 0BR
Tel: 0191 3702961

This accommodation is strictly for the use of liver patients and their families. In exceptional circumstances the flats may be used by Freeman staff at a cost of £10.00 per night per flat on the understanding that the premises are vacated immediately when needed by LIVERNORTH.



103 Beechwood House - Internal Layout



Beechwood House - Location Plan

LIVERNORTH

Liver Patient Support Group



ACCOMMODATION FOR PATIENTS & THEIR FAMILIES

103
Beechwood House
Freeman Hospital

GUIDANCE NOTES & CONDITIONS OF USE

This accommodation, 103 Beechwood House, is provided by LIVErNORTH as a support service to liver patients. It relies entirely on charitable donations and therefore it is important that the following guidelines and conditions are followed.

Access & Keys

From level 5 (ward 12) take the lift to level 1. On leaving the lift turn left through the double doors to the exterior of the building. Turn right and follow the path to the end of the building. Turn right continuing along the path, Beechwood House is ahead of you on the left (see plan overleaf).

Enter the building by using the number you have been given to open the main door. Go up the stairs to the 1st floor and look for the door marked 103.

Your key will open the front door of the flat and the bedroom door of the room you have been allocated.

Please beware of the raised thresh.

It is important that you hand the key to a member of staff on ward 12 when you either leave the hospital grounds or vacate the flat.

A lost key will cost LIVErNORTH £10 to replace.

Fire Precautions

Smoking is not allowed anywhere inside the flat.

Please read the fire instructions which are on the kitchen wall next to the fire blanket.

Facilities

A plan and directions to the flat are shown on the reverse of this leaflet. The accommodation comprises 2 private double bedrooms with a shared kitchen, living room, bathroom (shower) and separate W.C.

Please be considerate to other occupants.

The kitchen contains a fridge, cooker, microwave oven, kettle, pans, crockery and cutlery. Tea, coffee and sugar are provided free of charge.

Electrical Equipment

Do not use any electrical equipment which has not been tested by the hospital's engineers department. Failure to observe this rule will invalidate the insurance.

Linen

Towels are not provided.

Bed-linen is changed weekly: please strip the bed and leave dirty linen in the hall either each week or when vacating the room.

A set of clean linen can be found in the wardrobe.

Waste disposal

Bins are provided on the ground floor.

Please dispose of all foodstuffs when vacating the flat.

Telephones

The telephones in the flat are for internal use only. Public telephones are located throughout the main hospital building.

Pets

No animals are allowed in the flats.

Hotel Services

Please note that the Freeman Hospital Hotel Services have free access to every room for the purposes of cleaning and servicing the flats.

Disclaimer

LIVErNORTH can accept no responsibility for any personal injury you incur as a result of using this accommodation. In addition, you are advised that no claim can be accepted for the loss or damage of personal possessions.